

Plastic Terminal Box

Nomenclature

SG - **TB** - **4** **P** **G**

① ② ③ ④

- ① **Product name**
Plastic Terminal Box
- ② **Number of pins**
4 - 50 Pin
- ③ **Allowable current**
P, PT : 10A / P15 : 15A
- ④ **Color**
G : Gray / I : Ivory
GC : Gray with transparent cover
IC : Ivory with transparent cover



Feature

The boxes come in two colors – gray and ivory – with three types of covers : gray, ivory and transparent. Excellent waterproofing and dustproofing thanks to the polyurethane packing. Terminal integrated box using ABS, with various customized sizes available for user convenience.

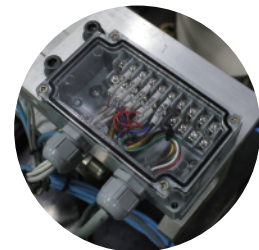
Product Specifications

Color: Gray, Ivory, Transparent cover
Tolerance: ±1mm
Operating temperature: -20 ~ 70°C
Protection rating: IP65 / IK08 / IP2X (TB-4P, 6P Only)
Material: ABS / Transparent cover [PC]
Mounting hole size: 0.17 in

Electrical Specifications

Allowable current: 10A / 15A
Rated frequency: 50Hz
Rated input voltage: AC250 Volts
Withstand voltage: 1880V / 1minute

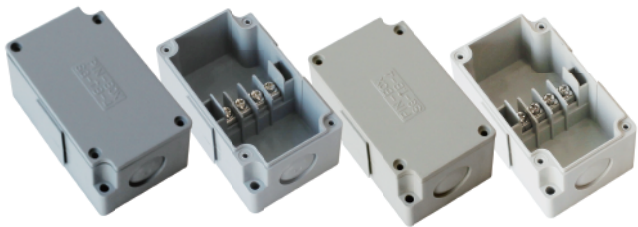
Safety Specifications



Description

Plastic terminal boxes use ABS and are suitable for sensors, limits S/W, V/V BOX and various kinds of intermediate terminal boxes. Assembling existing prefabricated terminals and boxes is not difficult; productivity is maximized with all-in-one production, which saves resources so that they can be used more practically and safely. It is used in a range of fields, including industrial machinery, robots, commercial wiring, and low voltage control systems.

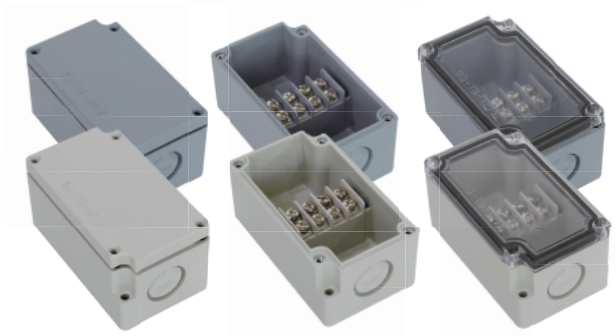
Model	Size(mm)	Weight(g)	Model	Size(mm)	Weight(g)
SG -TB - 4P	50 X 85 X 40	80	SG - TB - 15P15	100 X 200 X 65	423
SG - TB - 4P15	52 X 90 X 45	94	SG - TB - 15PT	75 X 170 X 55	290
SG - TB - 4PT	65 X 65 X 45	99	SG - TB - 20P15	150 X 160 X 65	479
SG - TB - 6P	55 X 85 X 40	88	SG - TB - 20PT	80 X 235 X 56	440
SG - TB - 6P15	65 X 90 X 45	135	SG - TB - 30P	125 X 190 X 65	527
SG - TB - 6PT	65 X 80 X 45	115	SG - TB - 30PT	125 X 190 X 65	527
SG - TB - 10P15	90 X 100 X 45	183	SG - TB - 40P	160 X 260 X 90	1421
SG - TB - 10PT	65 X 110 X 45	156	SG - TB - 50P	160 X 260 X 90	1522



SG-TB-4P

10A

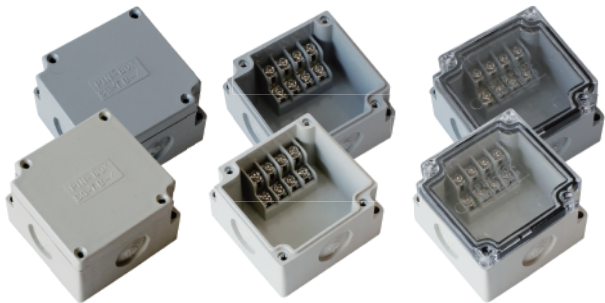
- Size(mm) : 50 X 85 X 40
- Weight : 80g
- Color : Gray, Ivory



SG-TB-4P15

15A

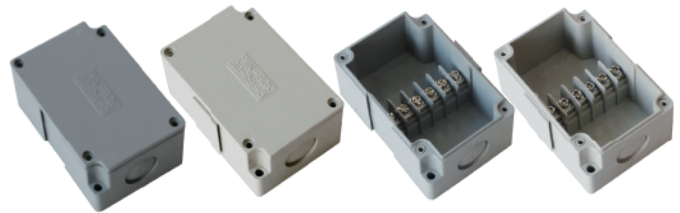
- Size(mm) : 52 X 90 X 45
- Weight : 94g
- Color : Gray, Ivory, Transparent cover



SG-TB-4PT

10A

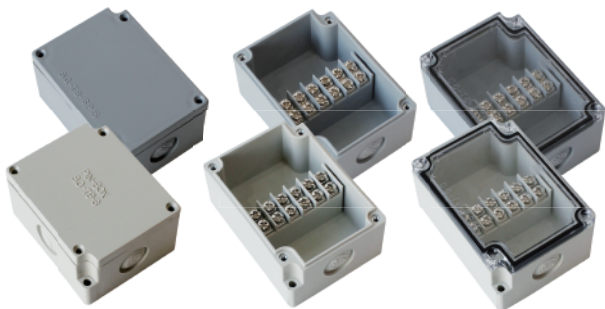
- Size(mm) : 65 X 65 X 45
- Weight : 99g
- Color : Gray, Ivory, Transparent cover



SG-TB-6P

10A

- Size(mm) : 55 X 85 X 40
- Weight : 88g
- Color : Gray, Ivory



SG-TB-6P15

15A

- Size(mm) : 65 X 90 X 45
- Weight : 135g
- Color : Gray, Ivory, Transparent cover



SG-TB-6PT

10A

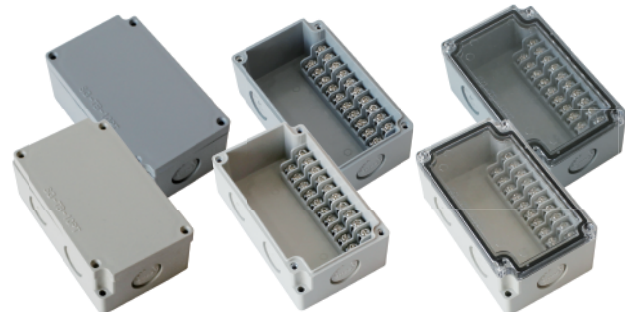
- Size(mm) : 65 X 80 X 45
- Weight : 115g
- Color : Gray, Ivory, Transparent cover



SG-TB-10P15

15A

- Size(mm) : 90 X 100 X 45
- Weight : 183g
- Color : Gray, Ivory, Transparent cover



SG-TB-10PT

10A

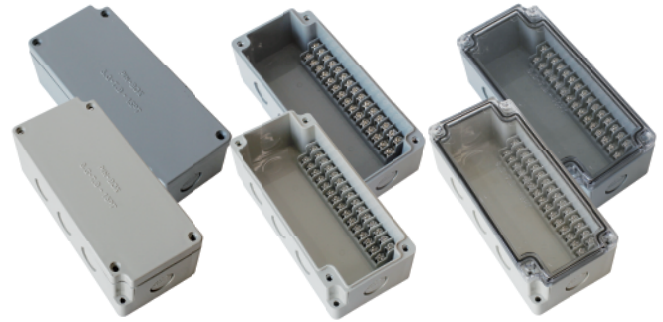
- Size(mm) : 65 X 110 X 45
- Weight : 156g
- Color : Gray, Ivory, Transparent cover



SG-TB-15P15

15A

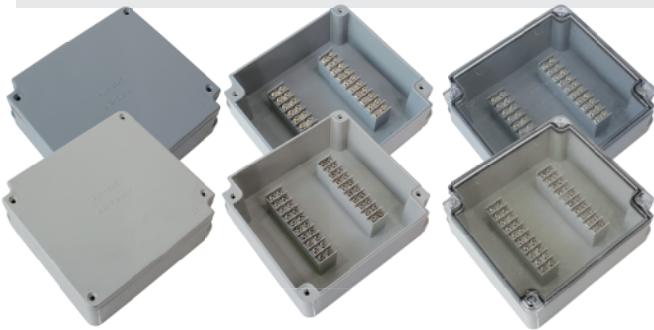
- Size(mm) : 100 X 200 X 65
- Weight : 423g
- Color : Gray, Ivory, Transparent cover



SG-TB-15PT

10A

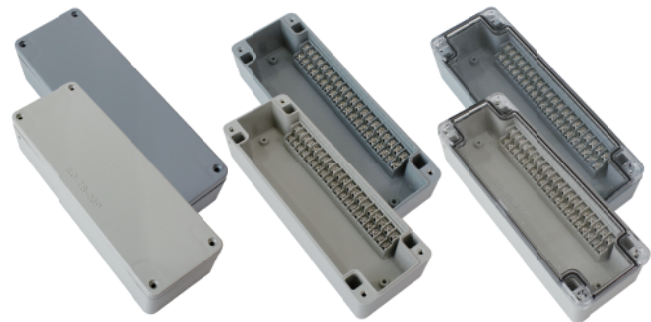
- Size(mm) : 75 X 170 X 55
- Weight : 290g
- Color : Gray, Ivory, Transparent cover



SG-TB-20P15

15A

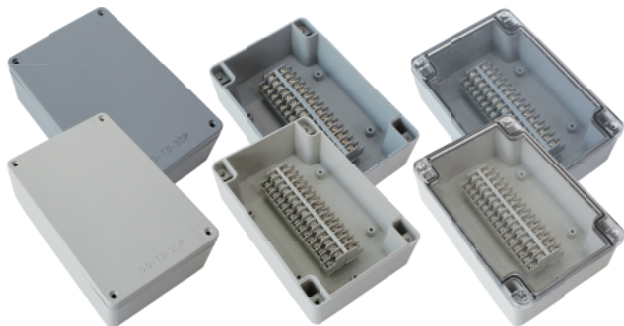
- Size(mm) : 150 X 160 X 65
- Weight : 479g
- Color : Gray, Ivory, Transparent cover



SG-TB-20PT

10A

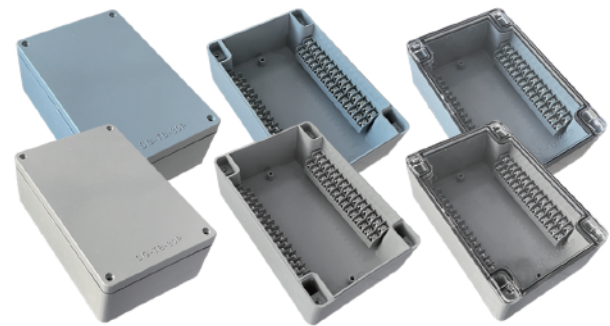
- Size(mm) : 80 X 235 X 56
- Weight : 440g
- Color : Gray, Ivory, Transparent cover



SG-TB-30P

10A

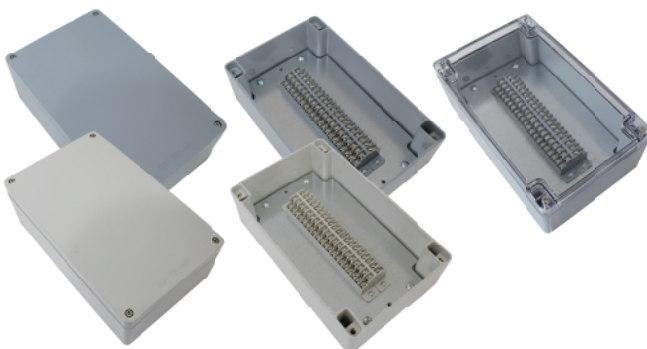
- Size(mm) : 125 X 190 X 65
- Weight : 527g
- Color : Gray, Ivory, Transparent cover



SG-TB-30PT

10A

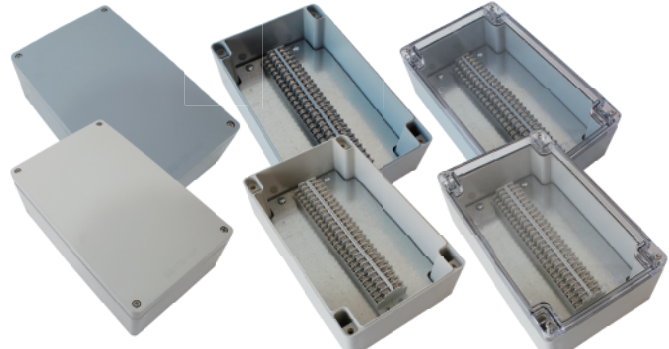
- Size(mm) : 125 X 190 X 65
- Weight : 527g
- Color : Gray, Ivory, Transparent cover



SG-TB-40P

10A

- Size(mm) : 160 X 260 X 90
- Weight : 1421g
- Color : Gray, Ivory, Transparent cover



SG-TB-50P

10A

- Size(mm) : 160 X 260 X 90
- Weight : 1522g
- Color : Gray, Ivory, Transparent cover

Plastic Junction Box

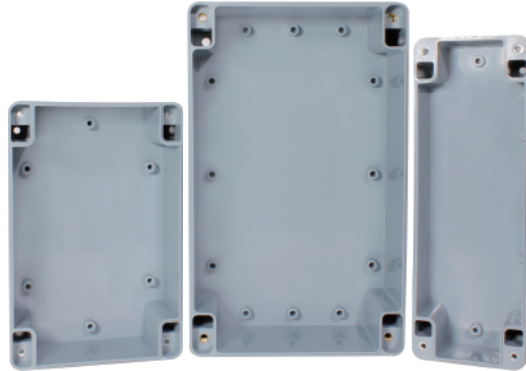
RoHS

Nomenclature

SG - **JB** - **802305**

① ②

- ① **Product name**
Plastic Junction Box
- ② **Product size**
Width x length x height



Product Specifications

Color: Gray / Ivory / Transparent cover
Tolerance: ± 1 mm
Operating temperature: $-20 \sim 70^{\circ}\text{C}$
Protection rating: IP65
Material: ABS / Transparent cover [PC]

Model	Size(mm)	Weight(g)
SG-JB-802305	80 X 235 X 56	300
SG-JB-121906	125 X 190 X 65	370
SG-JB-162609	160 X 260 X 90	750

Plastic Push Button Box

Nomenclature

SG - **PB** - **22** **01** **(70)** **Y**

① ② ③ ④ ⑤

- ① **Product name**
Plastic Push Button Box
- ② **Hole size**
 $\varnothing 22 / \varnothing 25 / \varnothing 30$
- ③ **Number of holes**
1 / 2 / 3 / 4 Holes
- ④ **Product height**
55mm / 70mm
- ⑤ **Cover color**
Red, Yellow, White



Feature

UL approved product
The plastic push button box has a hole ($\varnothing 22 / \varnothing 25 / \varnothing 30$) in the cover so that the switch can be installed without a separate process.

Description

The plastic pushbutton box is made in three colors: red, yellow, and white. Plastic push button boxes are used especially often in emergency stop switches, and are safer to use with bright, vivid colors when they are used as emergency switches. This product is designed to be durable and easy to install using PC materials.
This plastic push button box is designed to be durable and easy to install using PC materials.

Product Specifications

Color: Black (Base) / Red, Yellow, White (Cover)
Tolerance: ± 1 mm
Operating temperature: $-20 \sim 110^{\circ}\text{C}$
Material: PC

Safety Specifications



※ The UL model is an order made.

Example of use



※ There are only 1 hole and 2 holes in the mini type.

Mini 1 hole



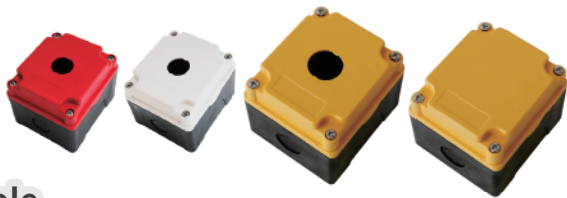
- Size(mm) : 51 X 60 X 45
- Hole size : Ø12, Ø16
- Cover color : White, Yellow
- Weight : 139g

Mini 2 holes



- Size(mm) : 50 X 95 X 45
- Hole size : Ø12, Ø16
- Cover color : White, Yellow
- Weight : 157g

1 hole



- Size(mm) : 80 X 90 X 55 / 80 X 90 X 70
- Hole size : No Hole, Ø22, Ø25, Ø30
- Weight : 178g
- Cover color : Red, White, Yellow

2 holes



- Size(mm) : 80 X 135 X 55 / 80 X 135 X 70
- Hole size : No Hole, Ø22, Ø25, Ø30
- Weight : 231g
- Cover color : Red, White, Yellow

3 holes



- Size(mm) : 80 X 180 X 55 / 80 X 180 X 70
- Hole size : Ø22, Ø25, Ø30
- Weight : 253g
- Cover color : Red, White, Yellow

4 holes



- Size(mm) : 80 X 220 X 55 / 80 X 220 X 70
- Hole size : Ø22, Ø25, Ø30
- Weight : 303g
- Cover color : Red, White, Yellow

Hole	Ø	Model	Size(mm)	Weight	Hole	Ø	Model	Size(mm)	Weight																																						
MINI 1 hole	Ø12	SG-PB-1201	51 X 60 X 45	139g	MINI 2 holes	Ø12	SG-PB-1202	50 X 95 X 45	157g																																						
	Ø16	SG-PB-1601				Ø16	SG-PB-1602			1 hole	No Hole	SG-PB-0001	80 X 90 X 55 80 X 90 X 70	178g	3 holes	Ø22	SG-PB-2203	80 X 180 X 55 80 X 180 X 70	253g	Ø22	SG-PB-2201	Ø25	SG-PB-2503	Ø25	SG-PB-2501	Ø30	SG-PB-3003	Ø30	SG-PB-3001			2 holes	No Hole	SG-PB-0002	80 X 135 X 55 80 X 135 X 70	231g	4 holes	Ø22	SG-PB-2204	80 X 220 X 55 80 X 220 X 70	303g	Ø22	SG-PB-2202	Ø25	SG-PB-2504	Ø25	SG-PB-2502
1 hole	No Hole	SG-PB-0001	80 X 90 X 55 80 X 90 X 70	178g	3 holes	Ø22	SG-PB-2203	80 X 180 X 55 80 X 180 X 70	253g																																						
	Ø22	SG-PB-2201				Ø25	SG-PB-2503																																								
	Ø25	SG-PB-2501				Ø30	SG-PB-3003																																								
	Ø30	SG-PB-3001																																													
2 holes	No Hole	SG-PB-0002	80 X 135 X 55 80 X 135 X 70	231g	4 holes	Ø22	SG-PB-2204	80 X 220 X 55 80 X 220 X 70	303g																																						
	Ø22	SG-PB-2202				Ø25	SG-PB-2504																																								
	Ø25	SG-PB-2502				Ø30	SG-PB-3004																																								
	Ø30	SG-PB-3002																																													