

# Aluminum Box

## Nomenclature

SG - **AL** - **6171** - **48**

①      ②      ③

① Product name  
Aluminum Box

② Product size (mm)  
Width x length

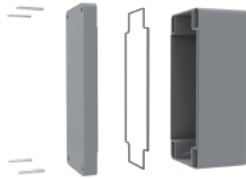
③ Product height  
Height



## Feature

UL approved product.

Packaging in polyurethane materials using a Forming Machine provides waterproofing and dustproofing effects.



Volts- Covers-Polyurethane packaging- consists of a base  
Mounting plates are available separately.

(No mounting plate for SG-AL-6171-48 / 7093-52 models)

## Description

Aluminum boxes are basic junction boxes made from aluminum casting, and are mainly used in industrial machinery, robotics, welding machines or automobiles, petrochemical plant facilities, oil supplies and gas supply facilities. Aluminum boxes are easy to install and come in a variety of sizes tailored to the customer's needs, so they can be used in practical ways that serve the user's convenience, and have obtained ROHS certification and UL certification, confirming the safe use of the product.

## Product Specifications

Color: Gray

Tolerance:  $\pm 1$ mm

Thickness: 3.5t ~ 4t

Operating temperature: -20 ~ 180°C

Protection rating: IP67 / IK10

Material: Aluminum [ALDC 12.1]

## Safety Specifications



※ The UL model is an order made.

Model	Size(mm)	Weight(g)	Model	Size(mm)	Weight(g)
SG-AL-6171-48	61 X 71 X 48	220	SG-AL-1212-08	120 X 120 X 80	690
SG-AL-7093-52	70 X 93 X 52	249	SG-AL-1222-09	125 X 223 X 90	1314
SG-AL-1270-52	70 X 128 X 52	360	SG-AL-1616-09	160 X 160 X 90	1205
SG-AL-1111-52	110 X 110 X 52	398	SG-AL-1621-10	160 X 210 X 100	1623
SG-AL-1770-55	70 X 172 X 55	435	SG-AL-1626-09	161 X 263 X 90	1699
SG-AL-1214-62	125 X 145 X 62	566	SG-AL-2023-11	200 X 230 X 110	2500
SG-AL-8023-08	80 X 235 X 80	844	SG-AL-2333-12	230 X 330 X 120	3997
SG-AL-1219-08	125 X 190 X 80	944	SG-AL-2333-18	230 X 330 X 180	5237
SG-AL-1010-08	100 X 100 X 80	580			

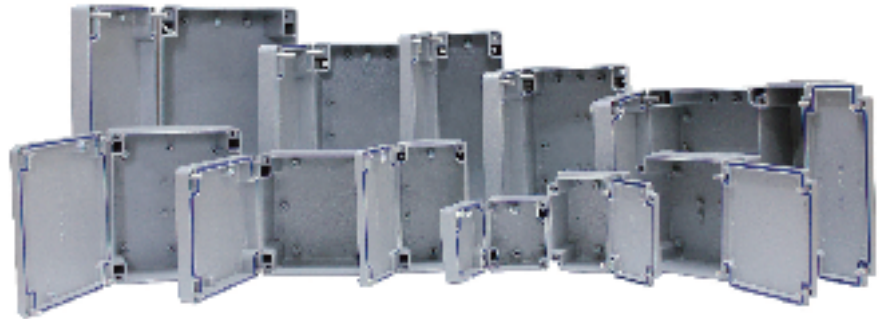
# Ex Aluminum Box


## Nomenclature

SG - **EX** **617148**  
 ①            ②

① **Product name**  
Ex Aluminum Box

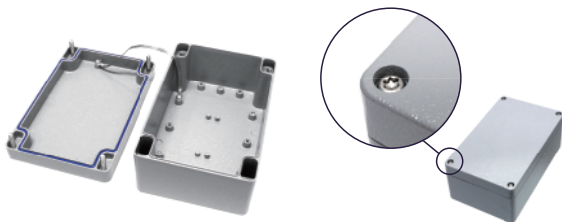
② **Product size (mm)**  
Width x length x Height



IECEX marking	Ex eb IIC Gb Ex tb IIIC Db
ATEX marking	 II 2G Ex eb IIC Gb II 2D Ex tb IIIC Db

## Feature

IECEX explosion proof approved model  
 Ground terminal connection.(3 Earthing ; 2 inside, 1 outside)  
 Use star L wrench, Waterproof, Dustproof.  
 Mounting plates are available separately.



## Product Specifications

Product Specifications  
 Color: Gray  
 Tolerance: ±1mm  
 Thickness: 3.5t ~ 4t  
 Operating temperature: -20 ~ 80°C  
 Protection rating: IP66  
 Material: Aluminum [ALDC 12.1]

## Safety Specifications



## Description

IECEX aluminum explosion proof boxes are certified by IECEx and are used for various purposes in various industries such as factory warehouses. These are rated IP66, protected from dust and high water pressure streams sprayed from all directions. It has 15 different sizes, so it can be used for various purposes in places where explosion-proof requirements are required.

Model	Size(mm)	Weight	Model	Size(mm)	Weight
SG-EX617148	61 X 71 X 48	220	SG-EX101008	100 X 100 X 80	580
SG-EX709352	70 X 93 X 52	249	SG-EX121208	120 X 120 X 80	690
SG-EX127052	70 X 128 X 52	360	SG-EX122209	125 X 223 X 90	1314
SG-EX111152	110 X 110 X 52	398	SG-EX161609	160 X 160 X 90	1205
SG-EX177055	70 X 172 X 55	435	SG-EX162110	160 X 210 X 100	1623
SG-EX121462	125 X 145 X 62	566	SG-EX162609	161 X 263 X 90	1699
SG-EX802308	80 X 235 X 80	844	SG-EX233312	230 X 330 X 120	3997
SG-EX121908	125 X 190 X 80	944			

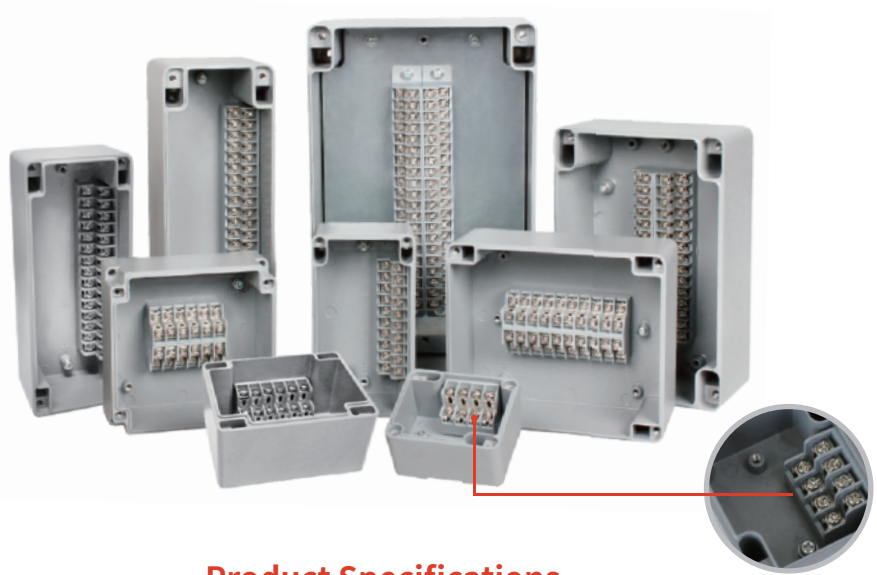
# Aluminum Terminal Box

## Nomenclature



① Product name  
Aluminum Terminal Box

② Number of pins  
4 - 50 Pin



## Feature

This is all-in-one type terminal with various sizes and terminal types, and its polyurethane foaming is effective for waterproofing and dust proofing, and is highly productive and efficient.

## Electrical Specifications

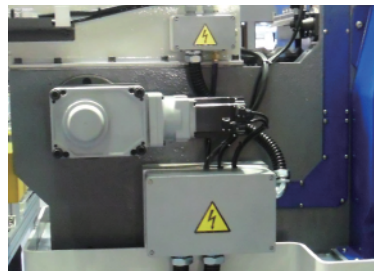
- Allowable current: 10A
- Rated frequency: 50Hz
- Rated input voltage: AC250 Volts
- Withstand voltage: 1880V / 1 minute

## Safety Specifications



## Product Specifications

- Color: Gray
- Tolerance:  $\pm 1\text{mm}$
- Thickness: 3.5t ~ 4t
- Operating temperature:  $-20 \sim 70^\circ\text{C}$
- Protection rating: IP67 / IK10
- Material: Aluminum [ALDC 12.1], Terminal Block [ABS]



## Description

The aluminum terminal box is an integrated junction box with terminals located inside the box. Our aluminum terminals are manufactured from aluminum with a standard rating of 10Amp to 250V, and the exterior is painted in gray. Just like our aluminum boxes, the aluminum terminal boxes are packed with polyurethane gasket foaming, providing excellent waterproofing and dust proofing, and are used in a wide range of industrial machinery, robotics, commercial wiring and low voltage control systems.

Model	Size(mm)	Weight(g)	Model	Size(mm)	Weight(g)
SG - AL - 4P	61 X 71 X 48	239	SG - AL - 20PT	80 X 235 X 80	957
SG - AL - 6P	70 X 93 X 52	283	SG - AL - 30P	125 X 190 X 80	1205
SG - AL - 10P	70 X 128 X 52	374	SG - AL - 40P	161 X 263 X 90	1822
SG - AL - 12P	110 X 110 X 52	482	SG - AL - 50P -S	161 X 263 X 90	2447
SG - AL - 15P	70 X 172 X 55	529	SG - AL - 50P -L	230 X 330 X 120	5237
SG - AL - 20P	125 X 145 X 62	669			

# Heat-resisting Aluminum Terminal Box

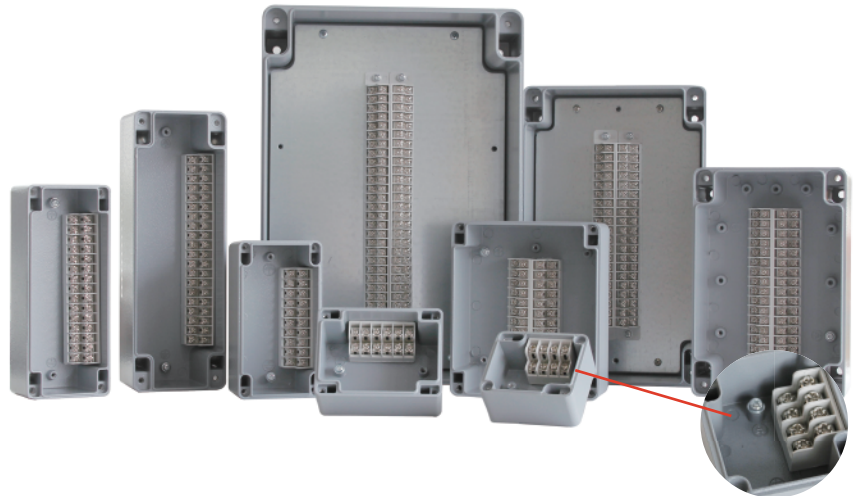
## Nomenclature

SG - **HL** - **4P**

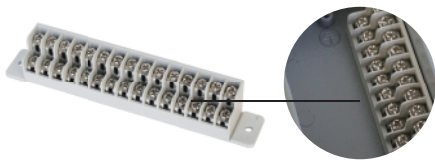
①      ②

① **Product name**  
Heat-resisting  
Aluminum Terminal Box

② **Number of pins**  
4 - 50 Pin



## Feature



Use of heat-resistant terminals that can be used in temperatures up to 400°C.

Able to work in hotter environments than the AL aluminum series.

## Electrical Specifications

Allowable current: 10A

Rated frequency: 50Hz

Rated input voltage: AC 250 Volts

Withstand voltage: 1880V / 1 minute

## Description

The heat-resistant aluminum terminal box uses a heat-resistant terminal stand in a box made of aluminum castings, making it more heat-resistant than other terminal boxes, which allows it to be used in environments with higher ambient temperatures. Like the aluminum terminal box of SEGIBIZ it is made to the same standard rating, has excellent waterproof and dust proof effects, and is the same size, so it can be used in various industrial facilities that require heat-resistance.

## Product Specifications

Color: Box - Gray / Terminal Block - Ivory

Tolerance:  $\pm 1\text{mm}$

Thickness: 3.5t ~ 4t

Operating temperature: -20 ~ 180°C

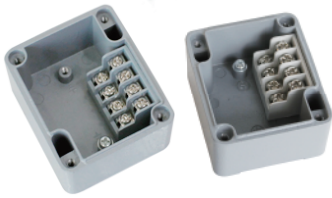
Protection rating: IP67 / IK10

Material: Aluminum [ALDC 12.1], Terminal Block [mPPO]

## Safety Specifications

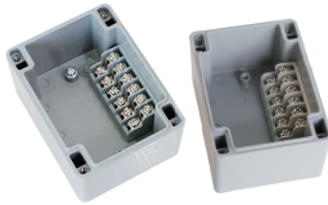
## RoHS

Model	Size(mm)	Weight(g)	Model	Size(mm)	Weight(g)
SG-HL-4P	61 X 71 X 48	239	SG-HL-20PT	80 X 235 X 80	957
SG-HL-6P	70 X 93 X 52	283	SG-HL-30P	125 X 190 X 80	1205
SG-HL-10P	70 X 128 X 52	374	SG-HL-40P	161 X 263 X 90	1822
SG-HL-12P	110 X 110 X 52	482	SG-HL-50P -S	161 X 263 X 90	2447
SG-HL-15P	70 X 172 X 55	529	SG-HL-50P -L	230 X 330 X 120	5237
SG-HL-20P	125 X 145 X 62	669			



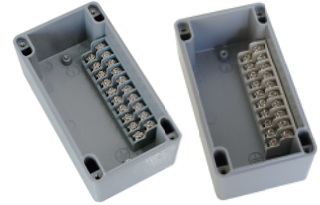
**SG - AL / HL - 4P**

- Size(mm) : 61 X 71 X 48
- Weight : 239g
- Allowable current : 10A



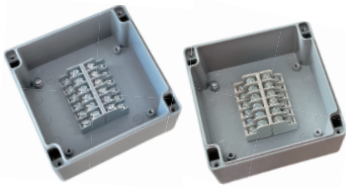
**SG - AL / HL - 6P**

- Size(mm) : 70 X 93 X 52
- Weight : 283g
- Allowable current : 10A



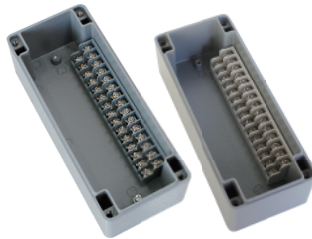
**SG - AL / HL - 10P**

- Size(mm) : 70 X 128 X 52
- Weight : 374g
- Allowable current : 10A



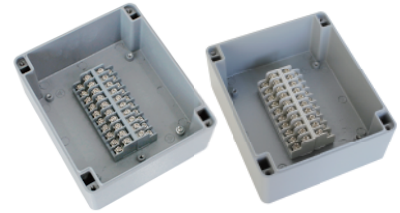
**SG - AL / HL - 12P**

- Size(mm) : 110 X 110 X 52
- Weight : 482g
- Allowable current : 10A



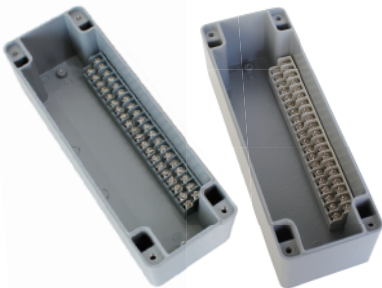
**SG - AL / HL - 15P**

- Size(mm) : 70 X 172 X 55
- Weight : 529g
- Allowable current : 10A



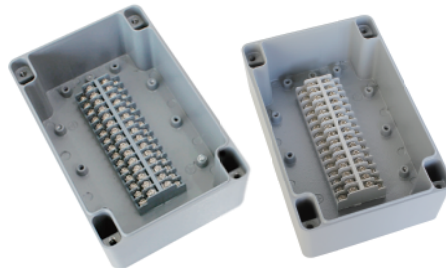
**SG - AL / HL - 20P**

- Size(mm) : 125 X 145 X 62
- Weight : 669g
- Allowable current : 10A



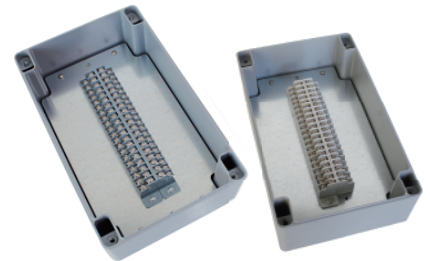
**SG - AL / HL - 20PT**

- Size(mm) : 80 X 235 X 80
- Weight : 957g
- Allowable current : 10A



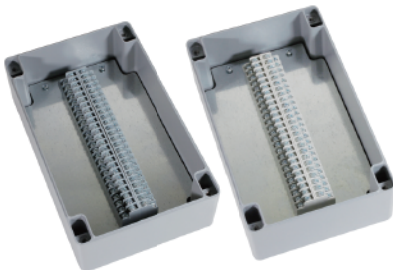
**SG - AL / HL - 30P**

- Size(mm) : 125 X 190 X 80
- Weight : 1205g
- Allowable current : 10A



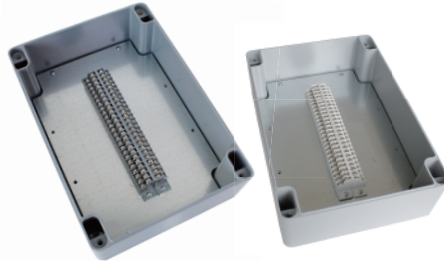
**SG - AL / HL - 40P**

- Size(mm) : 161 X 263 X 90
- Weight : 1822g
- Allowable current : 10A



**SG - AL / HL - 50P - S**

- Size(mm) : 161 X 263 X 90
- Weight : 2447g
- Allowable current : 10A



**SG - AL / HL - 50P - L**

- Size(mm) : 230 X 330 X 120
- Weight : 5237g
- Allowable current : 10A

**MEMO**

# Aluminum Push Button Box

## Nomenclature

SG - **CB** - **22** **01**

①      ②      ③

- ① **Product name**  
Aluminum Control Box
- ② **Hole size**  
No Hole / Ø22 / Ø25 / Ø30
- ③ **Number of holes**  
1 / 2 / 3 / 4 holes



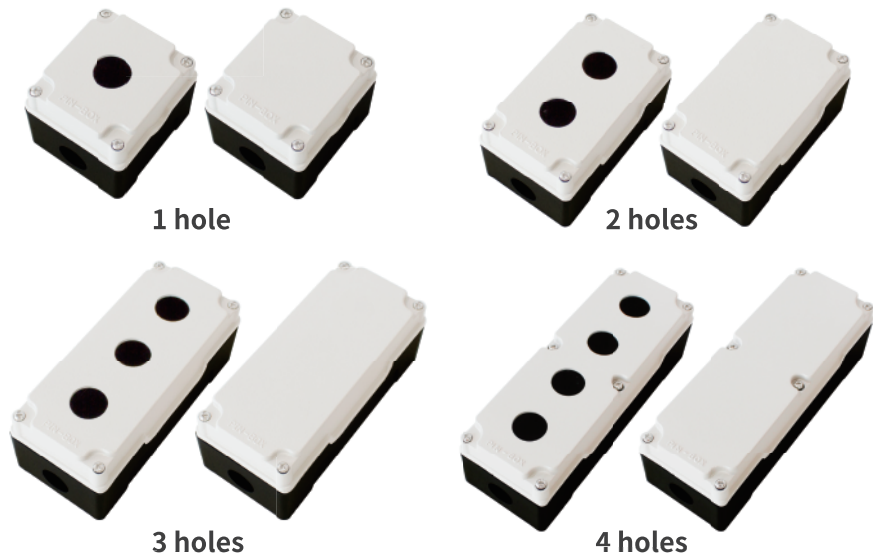
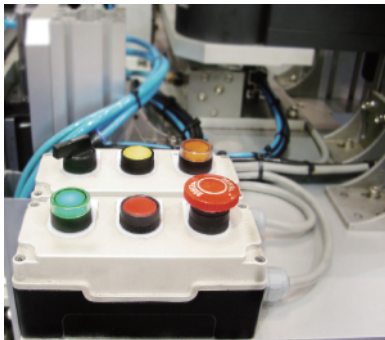
## Feature

UL approved product.  
The aluminum push button box has a hole (Ø22 / Ø25 / Ø30) in the cover, enabling the switch to be installed without a separate process.

## Product Specifications

Color: Base – Black / Cover – White  
Tolerance: ±1mm  
Operating temperature: -20 ~ 180°C  
Hole size: 22mm / 25mm / 30mm  
Material: Aluminum [ALDC 12.1]

## Example of use



## Safety Specifications



**RoHS**

※ The UL model is an order made.

Hole	Ø	Model	Size(mm)	Weight(g)	Hole	Ø	Model	Size(mm)	Weight(g)
1 hole	No Hole	SG-CB-0001	80 X 90 X 70	385	3 holes	No Hole	SG-CB-0003	80 X 180 X 70	561
	Ø22	SG-CB-2201				Ø22	SG-CB-2203		
	Ø25	SG-CB-2501				Ø25	SG-CB-2503		
	Ø30	SG-CB-3001				Ø30	SG-CB-3003		
2 holes	No Hole	SG-CB-0002	80 X 135 X 70	481	4 holes	No Hole	SG-CB-0004	80 X 220 X 70	686
	Ø22	SG-CB-2202				Ø22	SG-CB-2204		
	Ø25	SG-CB-2502				Ø25	SG-CB-2504		
	Ø30	SG-CB-3002				Ø30	SG-CB-3004		