

Terminal Block

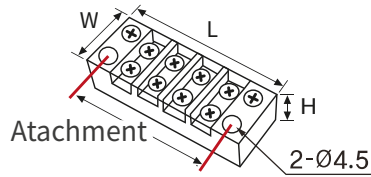
RoHS

Nomenclature

SG - **TB** - **1502**

① ②

- ① **Product name**
Terminal Block
- ② **Current / Number of pins**
15A / 02 - 10 Pin



Product Specifications

Tolerance: $\pm 1\text{mm}$
 Color: Black
 Operating temperature: $-20 \sim 70^\circ\text{C}$
 Rated voltage: 250V / Allowable current: 15A
 Material: PC

Model	Size(mm)			
	Length	Width	Height	Attachment
SG-TB-1502	38	20	14	28
SG-TB-1503	48			38
SG-TB-1504	57			48
SG-TB-1506	77			67
SG-TB-1510	117			107

Fixed Bracket

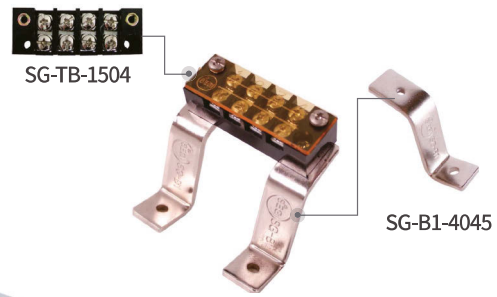
RoHS

Description

It is designed to relieve inconvenience by using it when taking out a terminal on the panel plate.

Product Specifications

Tolerance: $\pm 1\text{mm}$
 Color: Silver
 Material: Steel



Size (mm)					
SG-B1-4045	SG-B1-4090	SG-B2-6045	SG-B2-6090	SG-B3-4045	SG-B3-4090

- ※ SG-B3-4045 : Only fixed terminal 100A or higher products are available
- ※ Width : B1, B2 - 17mm / B3 - 22mm / Thickness : 3t

DC Terminal Block

RoHS

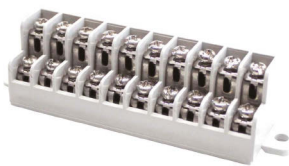


Product Specifications

Tolerance: $\pm 1\text{mm}$
 Color: Gray
 Operating temperature : $-20 \sim 70^{\circ}\text{C}$
 Rated voltage : AC250V / Allowable current : 10A

HC Terminal Block

(Heat-resistant terminal block)

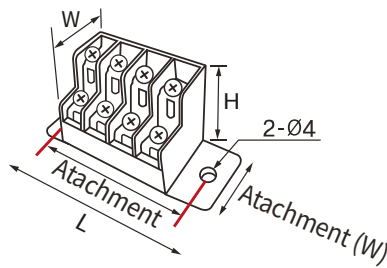


Product Specifications

Tolerance: $\pm 1\text{mm}$
 Color: Ivory
 Operating temperature : $-20 \sim 400^{\circ}\text{C}$
 Rated voltage : AC250V / Allowable current : 10A

Description

It is used to organize, connect power wires inside the PCB substrate electrical channels.



Model	Size(mm)					
	Length	Width	Height	Attachment Width	Attachment	Weight(g)
SG DC(HC) 4P	51	22	27	14	42.8	23
SG-DC(HC)-6P	67		27	14	58.8	33
SG-DC(HC)-10P	100		27	14	91	53
SG-DC(HC)-15P	150		27	22	138	78
SG-DC(HC)-20P	192		32	22	180.1	109
SG-DC(HC)-25P	232		31	22	220	134

Din Rail

RoHS

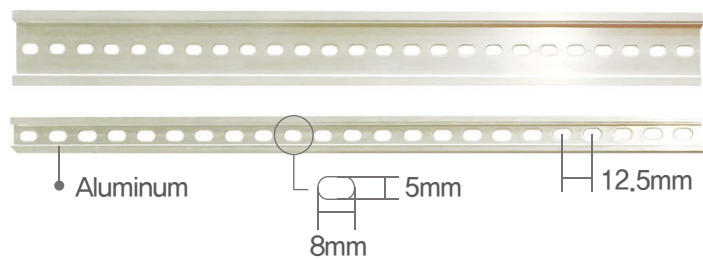
Nomenclature

SG - DR - 35

① ②

① Product name
Din Rail

② Width
15 : 15mm
35 : 35mm



※ ER-15 / 35 Hole size and spacing are the same

Product Specifications

Tolerance: $\pm 1\text{mm}$
 Color : Silver (anodizing)
 Material: Aluminum

Model	Size (mm)	
	Width	Length
SG-DR-15	15	1000
SG-DR-35	35	1000

Short Bar

RoHS

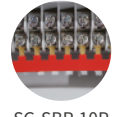
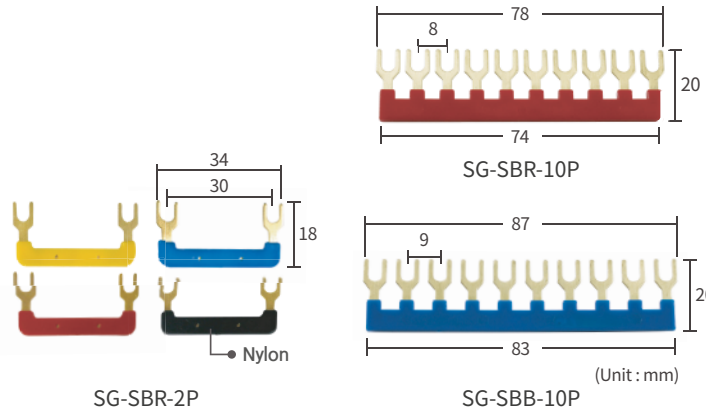
Nomenclature

SG - **SB(R)** - **2P**

① ②

① **Product name**
Short Bar

② **Number of holes**
2P / 10Pin



Product Specifications

Tolerance: ±1mm
 Color: Yellow, Blue, Red, Black
 Current: 10A, 15A
 Material: Brass, Nylon coating

Model	Color	Applicable products
SG-SB-2P	Yellow, Blue, Red, Black	MY-2, MY-4 For relay sockets
SG-SBR-10P	Red	For 10A TB - 4P, 4PT, 6P, 6PT, 10PT, 15PT, 20PT, 30P, 40P, 50P AL - 4P, 6P, 10P, 12P, 15P, 20P, 20PT, 30P, 40P, 50P-S, 50P-L
SG-SBB-10P	Blue	For 15A TB - 4P15, 6P15, 10P15, 15P15, 20P15

Product Specifications

Color: Yellow, Blue, Red, Brown, Green, Gray, Black, White
 Material: PVC flame-retardant
 - The advantage is that the insulation is not damaged by special injection.

Product name	Model
Assembly type - Short Bar (10 A)	KS - 102 Y/R
	KS - 103 Y/R
	KS - 106 Y/R
Assembly type - Short Bar (15 A)	KS - 152 Y/R
	KS - 153 Y/R
	KS - 1512 Y/R
Fixed type - Short Bar (20 A)	KS - 202 Y/R
	KS - 203 Y/R
	KS - 206 Y/R
	KS - 2012 Y/R
Assembly type - Short Bar (25 A)	KS - 252 Y/R
	KS - 253 Y/R
	KS - 256 Y/R
Assembly type - 쇼트바 (35 A)	KS - 352 Y/R
	KS - 353 Y/R
	KS - 358 Y/R
20 A ELB Kommonbar	KS - 2P

