

## Heavy Duty Industrial Warning Light



		AUM Series			
Model		AUM-A-125	AUM-B-125	AUM-A-150	AUM-B-150
Voltage		AC110V / AC220V / DC 12V / DC24 / DC48V			
Dimensions (mm)	Outdia	Ø125	Ø125	Ø147	Ø147
	Height	184	184	216	216
	Depth	176	230	205	260
Material		Body [ AL ], Ring [ CU ], Globe [ GPPS / PC ]		Body [ AL ], Ring [ CU ], Globe [ GPPS ]	
Light source & Operation	Bulb Revolving	•	•	•	•
	Multiple Function LED	•	•	•	•
	Caution LED	•	•	•	•
Mounting structure		Direct mounted			
Cable entry		Cable Glands 15			
Customization		Protective net , High luminance LED		Protective net , High luminance LED	
Page		p.69	p.69	p.70	p.70

## Warning Light &amp; Electronic Horn Combinations for Heavy Industry Applications



		AUCS Series		AUMS Series	
Model		AUCS 25W	AUCS 50W	AUMS-125	AUMS-150
Voltage		AC110V / AC220V / DC 12V / DC24 / DC48V			
Dimensions (mm)	Outdia	153	153	119	150
	Height	253	253	220	220
	Depth	245.5	327.6	435	470
Material		Body [ AL ], Globe [ GPPS / PC ], Electronic Horn [ ABS resin ]			
Timbre & Volume	Melody	Basic 3 sounds	100 ~ 130dB	Basic 3 sounds ( The Magic Flute , Home Sweet Home , Fur Elise )	120dB
	Buzzer	Basic 3 sounds	100 ~ 130dB	Basic 3 sounds ( bee bee bee bee , Ding dong , bee~bee~bee~ )	120dB
	Siren	Basic 3 sounds	100 ~ 130dB	Basic 3 sounds ( Fire , Emergency , Urgent )	120dB
Light source & Operation	Bulb Revolving	•		•	•
	Multiple Function LED	•		•	•
	Caution LED	•		•	•
Mounting structure		Direct mounted		Wall mounted	
Cable entry		#16 zinc connector		Cable Glands 15	
Customization				High luminance LED	Protective net, High luminance LED
Page		p.71		p.74	p.75



**AUM - A-R150**  
(With protective net option)

### Nomenclature

<b>AUM</b> –	<b>①</b>	–	<b>②</b>
	Type		Warning Light Model
A type			<b>R125/150</b> : Bulb Revolving(Ø125 /Ø150)
B type			<b>L125/150</b> : Multiple Function LED (Ø125 /Ø150)
			<b>CL125/150</b> : Caution LED (Ø125 /Ø150)

### Heavy duty industrial Warning / Caution LED

- ⊙ The body is aluminum housing structure with strong shock resistance and excellent corrosion resistance.
- ⊙ 2 types of housings depending on installation purpose
- ⊙ Suitable for outdoor, shipping, and heavy industry with completely waterproofed structure
- ⊙ Install the terminal block in the product or in the terminal box
- ⊙ Material : **Body** [ AL 7 types A AC7A ], **Ring** [CU], **Globe** [ PS , PC (125mm LED & Caution LED) ]
- ⊙ Standard body color : MUNSELL NO. 7.5G / 7.2
- ⊙ Operating Temperature : -25°C – +50°C

### AUM Series Common Specifications







#### 1 Housing

- ⊙ 2 housing types depending on use A / B



AUM - A	AUM - B
<ul style="list-style-type: none"> <li>⊙ Basic housing type without attached terminal box</li> <li>⊙ Suitable for installation in narrow spaces or on ceilings</li> </ul>	<ul style="list-style-type: none"> <li>⊙ Housing is equipped with a terminal box and 2 cable glands.</li> <li>⊙ Convenient line connection with the terminal box</li> </ul>

#### 2 A Variety of Selectable Light Source & Function Combinations

Light Source & Function	Globe Outer Diameter
 <b>Bulb Revolving</b>	 125mm
 <b>Multiple Function LED</b> steady / flashing-revolving / flashing / revolving	 150mm
 <b>Caution LED</b>	 150mm

#### 3 Protective Net

- ⊙ Protective net is installed at the outside of the globe to prevent damage by shock (Protective net is optional)



#### 4 Fully enclosed structure

- ⊙ The tightly sealed warning light structure is waterproof and dustproof

#### 5 High luminance type

- ⊙ High luminance type is available for Multiple Function LED and Caution LED providing excellent radiant effect

#### 6 Cable entry

- ⊙ Basic cable gland is equipped for A type, while 2 cable glands are in the basic terminal box for B type



# AUM - A/B-125 Series

## Heavy Duty Industrial Warning Light



AUM-A-R125

AUM-B-R125



AUM-A-L125

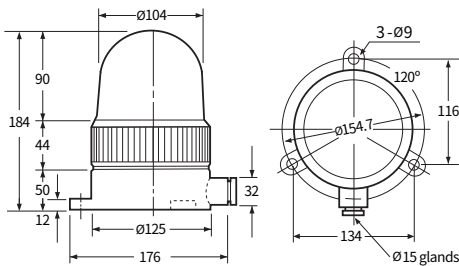
AUM-B-L125



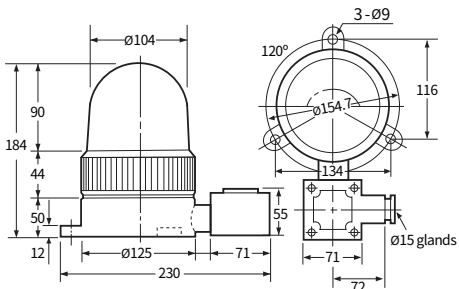
AUM-A-CL125

AUM-B-CL125

### Technical Diagram Unit: mm



AUM - A - 125



AUM - B - 125

### AUM - A / B - R125 Bulb Revolving

- Ø125mm, heavy duty industrial Bulb Revolving Warning light
- Rev. count : 90 – 100

MODEL	Voltage	Current	Bulb	Weight		Color
				A	B	
AUM-A-R125 & AUM-B-R125	AC110V	0.18(A)	12V 15W	1687g	2220g	<ul style="list-style-type: none"> <li>● Red (R)</li> <li>● Yellow (Y)</li> <li>● Green (G)</li> <li>● Blue (B)</li> </ul>
	AC220V	0.09(A)	12V 15W	1687g	2220g	
	DC12V	1.4(A)	12V 15W	1125g	1658g	
	DC24V	0.7(A)	24V 15W	1125g	1658g	
	DC48V	0.38(A)	48V 15W	1170g	1703g	

### AUM - A / B - L125 Multiple Function LED

- Ø125mm, heavy duty industrial Multiple Function LED Warning light
- 2 types of LED brightness : standard and high luminance
- Rev. count : Randomly controlled

MODEL	Voltage	Current	LED EA	Weight		Color
				A	B	
AUM-A-L125 & AUM-B-L125	AC110V	0.03(A)	54EA	1337g	1877g	<ul style="list-style-type: none"> <li>● Red (R)</li> <li>● Yellow (Y)</li> <li>● Green (G)</li> <li>● Blue (B)</li> </ul>
	AC220V	0.06(A)	54EA	1337g	1877g	
	DC12V	0.11(A)	54EA	1047g	1683g	
	DC24V	0.23(A)	54EA	1055g	1691g	
	DC48V	0.38(A)	54EA	1070g	1706g	
<b>High luminance</b>	AC110V	0.05(A)	90EA	1360g	1897g	<ul style="list-style-type: none"> <li>● Red (R)</li> <li>● Yellow (Y)</li> <li>● Green (G)</li> <li>● Blue (B)</li> </ul>
	AC220V	0.1(A)	90EA	1360g	1897g	
AUM-A-L125H & AUM-B-L125H	DC12V	0.19(A)	90EA	1070g	1703g	
	DC24V	0.38(A)	90EA	1078g	1711g	
	DC48V	0.66(A)	90EA	1093g	1726g	

### AUM - A / B - CL125 Caution LED

- Ø125mm, heavy duty industrial Caution LED Warning light

MODEL	Voltage	Weight	Color
AUM-A-CL125	AC110V	1712g	<ul style="list-style-type: none"> <li>● Red (R)</li> <li>● Yellow (Y)</li> <li>● Green (G)</li> <li>● Blue (B)</li> </ul>
	AC220V	1695g	
	DC12V	1735g	
	DC24V	1735g	
AUM-B-CL125	AC110V	1712g	<ul style="list-style-type: none"> <li>● Red (R)</li> <li>● Yellow (Y)</li> <li>● Green (G)</li> <li>● Blue (B)</li> </ul>
	AC220V	1695g	
	DC24V	1735g	



# AUM - A/B-150 Series

## Heavy Duty Industrial Warning Light



**AUM-A-R150**  
(+Protective net)

**AUM-B-R150**



**AUM-A-L150**

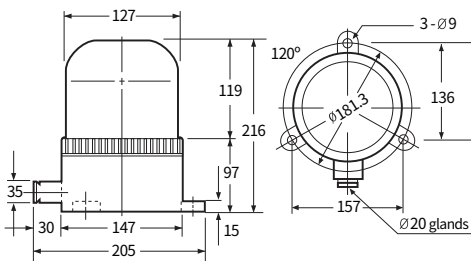
**AUM-B-L150**



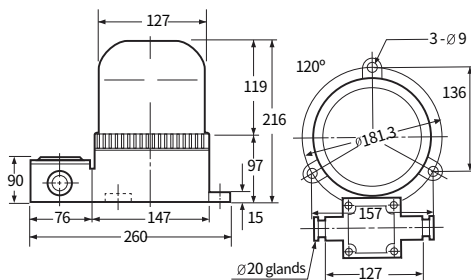
**AUM-A-CL150**

**AUM-B-CL150**

### Technical Diagram Unit: mm



**AUM - A - 150**



**AUM - B - 150**



### AUM - A / B - R150 Bulb Revolving



- ⊙ Ø150mm, heavy duty industrial Bulb Revolving Warning light
- ⊙ Rev. count : 90 – 100

MODEL	Voltage	Current	Bulb	Weight		Color
				A	B	
AUM-A-R150 & AUM-B-R150	AC110V	0.18(A)	12V 15W	2974g	3206g	<ul style="list-style-type: none"> <li>● Red (R)</li> <li>● Yellow (Y)</li> <li>● Green (G)</li> <li>● Blue (B)</li> </ul>
	AC220V	0.09(A)	12V 15W	2974g	3206g	
	DC12V	1.4(A)	12V 15W	2407g	2640g	
	DC24V	0.7(A)	24V 15W	2407g	2640g	
High luminance AUM-A-R150H & AUM-B-R150H	DC48V	0.38(A)	48V 15W	2452g	2648g	<ul style="list-style-type: none"> <li>● Red (R)</li> <li>● Yellow (Y)</li> <li>● Green (G)</li> <li>● Blue (B)</li> </ul>
	AC110V	0.3(A)	12V 35W	3000g	3232g	
	AC220V	0.18(A)	12V 35W	3000g	3232g	
	DC12V	3(A)	12V 35W	2433g	2666g	
AUM-B-R150H	DC24V	1.5(A)	24V 15W	2433g	2666g	<ul style="list-style-type: none"> <li>● Red (R)</li> <li>● Yellow (Y)</li> <li>● Green (G)</li> <li>● Blue (B)</li> </ul>



### AUM - A / B - L150 Multiple Function LED



- ⊙ Ø150mm, heavy duty industrial Multiple Function LED Warning light
- ⊙ 2 types of LED brightness : standard and high luminance
- ⊙ Rev. count : Randomly controlled

MODEL	Voltage	Current	LED EA	Weight		Color
				A	B	
AUM-A-L150 & AUM-B-L150	AC110V	0.03(A)	54EA	2150g	2902g	<ul style="list-style-type: none"> <li>● Red (R)</li> <li>● Yellow (Y)</li> <li>● Green (G)</li> <li>● Blue (B)</li> </ul>
	AC220V	0.06(A)	54EA	2150g	2902g	
	DC12V	0.11(A)	54EA	1858g	2610g	
	DC24V	0.23(A)	54EA	1866g	2618g	
High luminance AUM-A-L150H & AUM-B-L150H	DC48V	0.38(A)	54EA	1881g	2633g	<ul style="list-style-type: none"> <li>● Red (R)</li> <li>● Yellow (Y)</li> <li>● Green (G)</li> <li>● Blue (B)</li> </ul>
	AC110V	0.05(A)	90EA	2170g	2922g	
	AC220V	0.1(A)	90EA	2170g	2922g	
	DC12V	0.19(A)	90EA	1878g	2630g	
AUM-B-L150H	DC24V	0.38(A)	90EA	1886g	2638g	<ul style="list-style-type: none"> <li>● Red (R)</li> <li>● Yellow (Y)</li> <li>● Green (G)</li> <li>● Blue (B)</li> </ul>
	DC48V	0.66(A)	90EA	1901g	2653g	



### AUM - A / B - CL150 Caution LED

- ⊙ Ø150mm, heavy duty industrial Caution LED Warning light

MODEL	Voltage	Weight		Color
		A	B	
AUM-A-CL150	AC110V	2193g	2637g	<ul style="list-style-type: none"> <li>● Red (R)</li> <li>● Yellow (Y)</li> <li>● Green (G)</li> <li>● Blue (B)</li> </ul>
	AC220V	2173g	2617g	
AUM-B-CL150	DC12V	2216g	2660g	<ul style="list-style-type: none"> <li>● Red (R)</li> <li>● Yellow (Y)</li> <li>● Green (G)</li> <li>● Blue (B)</li> </ul>
	DC24V	2216g	2660g	



### Nomenclature

<b>AUCS</b>	-	<b>①</b>	-	<b>②</b>	-	<b>③</b>	-	<b>④</b>
Ø125	Warning Light Model		High luminance	Output		Sound		
<b>R125</b> : Bulb Revolving	<b>L125</b> : Multiple Function LED	<b>CL125</b> : Caution LED	<b>No indication</b> : Standard Type <b>H</b> : High luminance	<b>25W</b> <b>50W</b>		<b>AS</b> : Siren <b>AM</b> : Melody <b>AB</b> : Buzzer		

**Warning Light and Electronic horn combinations with excellent durability and perfectly enclosed structure, designed for heavy industry applications**

- ⊙ Heavy duty industrial 125mm Warning Light and Electronic Horn
- ⊙ 3 types of light sources can be chosen, based on installation purpose
- ⊙ Suitable for outdoor, shipping, and heavy industry with completely waterproofed structure
- ⊙ Classified into one-way (25W) / two-way (50W), depending on output
- ⊙ Material : **Body** [ Aluminum 7 types A AC7A ], **Globe** [ PS, PC ]  
**Electronic Horn** [ ABS resin ]
- ⊙ Standard body color : MUNSELL NO. 7.5G / 7.2
- ⊙ Operating Temperature : -25°C ~ +50°C

### AUCS Series Common Specifications

#### 1 Light Source & Function



Bulb Revolving



Multiple Function LED  
steady / flashing-revolving /  
flashing / revolving



Caution LED

#### 3 Max. Output & Horn Direction

- ⊙ One-way Horn : 25W / Two-way Horn : 50W

#### 4 Fully enclosed structure

- ⊙ Highly durable aluminum housing is a perfectly enclosed structure with excellent waterproofing and dust-proofing.

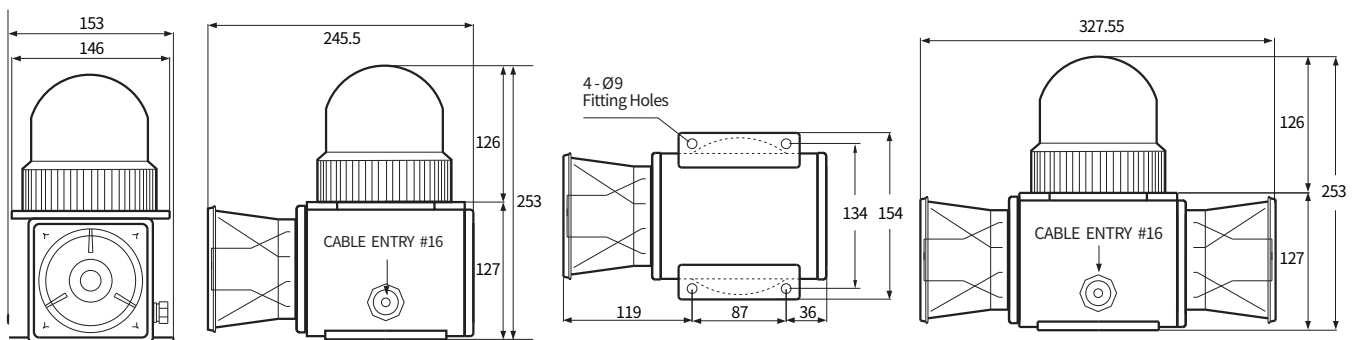
#### 2 Horn Sound Selection

- ⊙ 3 kinds of timbres : siren sounds, melody sounds, and buzzer sounds are available for the use

Warning sound	Channel	Basic timbre (3 sounds)
<b>Siren AS</b>	CH1	Fire
	CH2	Emergency
	CH3	Urgent
<b>Melody AM</b>	CH1	The Magic Flute
	CH2	Home Sweet Home
	CH3	Fur Elise
<b>Buzzer AB</b>	CH1	bee bee bee bee
	CH2	Ding dong
	CH3	bee~bee~bee~

### Technical Diagram

Unit: mm





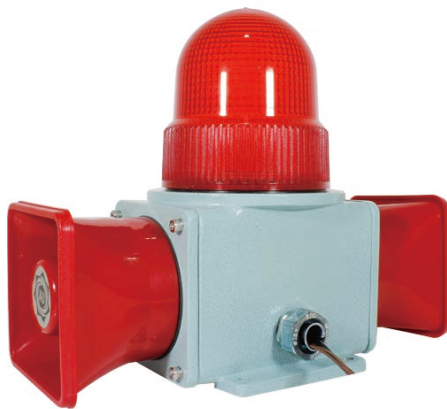


# AUCS Series

## Warning Light & Electronic Horn Combinations for Heavy Industry Applications



AUCS Series - 25W



AUCS Series - 50W

### Customization

○ Basic mounting for cable entry is #16 zinc connector, which can be changed to a cable gland through user specifications.



### AUCS - R125

Bulb Revolving Warning Light & Electronic Horn



○ Heavy Duty Industrial Bulb Revolving Warning Light & Electronic Horn Combinations (Ø125mm)

Model	Voltage	Current	Sound & volume	Bulb	Weight	Color	
AUCS-R125 25W (One-Way)	AC110V	0.42(A)	Siren <b>AS</b> / 120dB Fire / Emergency / Urgent	12V 15W	3760g	● Red (R)	
	AC220V	0.21(A)		12V 15W			
	DC12V	3.76(A)	Melody <b>AM</b> / 120dB The Magic Flute Home Sweet Home	12V 15W	3697g		● Yellow (Y)
	DC24V	1.79(A)		24V 15W	3735g		
AUCS-R125 50W (Two-Way)	DC48V	0.94(A)	Fur Elise	48V 15W	3837g	● Green (G)	
	AC110V	0.65(A)		12V 15W			4659g
	AC220V	0.32(A)	Buzzer <b>AB</b> / 120dB bee bee bee bee Ding dong	12V 15W	4594g		
	DC12V	5.97(A)		12V 15W			4594g
DC24V	2.76(A)	bee-bee-bee	24V 15W	4594g			
DC48V	1.49(A)	48V 15W	4696g				



### AUCS-L125

Multiple Function LED Warning Light & Electronic Horn



○ Heavy Duty Industrial Multiple Function LED Warning Light & Electronic Horn Combinations (Ø125mm)  
○ 2 types of LED brightness: standard and high luminance

Model	Voltage	Current	Sound & volume	LED EA	Weight	Color	
AUCS-L125 25W (One-Way)	AC110V	0.29(A)	Siren <b>AS</b> / 120dB Fire / Emergency / Urgent	54EA	3390g	● Red (R)	
	AC220V	0.14(A)		54EA			3097g
	DC12V	2.51(A)	Melody <b>AM</b> / 120dB The Magic Flute Home Sweet Home	54EA	3105g		● Yellow (Y)
	DC24V	1.22(A)		54EA	3120g		
AUCS-L125 50W (Two-Way)	DC48V	0.63(A)	Fur Elise	54EA	4272g	● Green (G)	
	AC110V	0.52(A)		54EA			3979g
	AC220V	0.26(A)	Buzzer <b>AB</b> / 120dB bee bee bee bee Ding dong	54EA	3987g		
	DC12V	4.72(A)		54EA			4002g
DC24V	2.19(A)	bee-bee-bee	54EA	4002g			
DC48V	1.17(A)	54EA	4002g				



### AUCS-CL125

Caution LED Warning Light & Electronic Horn

○ Heavy Duty Industrial Caution LED Warning Light & Electronic Horn Combinations (Ø125mm)

MODEL	Voltage	Sound & volume	Weight	Color	
AUCS-CL125 25W (One-Way)	AC110V	Siren <b>AS</b> / 120dB Fire / Emergency / Urgent	3091g	● Red (R)	
	AC220V				
	DC12V	Melody <b>AM</b> / 120dB The Magic Flute Home Sweet Home	3079g		● Yellow (Y)
	DC24V				
AUCS-CL125 50W (Two-Way)	AC110V	Fur Elise	4112g	● Green (G)	
	AC220V				Buzzer <b>AB</b> / 120dB bee bee bee bee Ding dong
	DC12V	bee-bee-bee	4085g		
	DC24V	4085g			



# AUMS Series

## Warning Light & Electronic Horn Combinations for Heavy Industry Applications



### Nomenclature



AUMS	①	②	③	④
	Warning Light Model	High luminance	Output	Sound
R125/150	Bulb Revolving	No indication :	25W	AS : Siren
L125/150	Multiple Function LED	Standard Type	35W	AM : Melody
CL125/150	Caution LED	H : High luminance		AB : Buzzer






### Wall mounted Warning Light & Electronic Horn Combinations for Heavy Industry Applications



- Wall mounted model configured with heavy duty industrial integral Warning Light & Electronic Horn
- Timbre is changeable conveniently with the switch
- Suitable for outdoor, shipping, and heavy industry with completely waterproofed structure
- Convenient line connection with the terminal box
- Material : **Body** [Aluminum 7 types A AC7A] , **Globe** [PS, PC] , **Horn** [ABS resin]
- Standard body color : MUNSSELL NO. 7.5G / 7.2
- Operating Temperature : -25°C – +50°C

### AUMS Series Common Specifications

#### 1 A Variety of Selectable Light Source & Function Combinations

Light Source & Function	Globe Outer Diameter
 <b>Bulb Revolving</b>	 125mm
 <b>Multiple Function LED</b> steady / flashing-revolving / flashing / revolving	
 <b>Caution LED</b>	 150mm

#### 3 Protective Net

- Protective net option is available for Ø150mm globe models according to the user's needs

#### 5 High Luminance Type

- High luminance type is available for excellent radiance effect

#### 2 Electronic Horn Sound Selection

- 3 kinds of timbres: siren sounds, melody sounds, and buzzer sounds are available for the use
- A switch attached at the outside to change timbre

Warning sound	Channel	Basic timbre (3 sounds)
<b>Siren AS</b>	CH1	Fire
	CH2	Emergency
	CH3	Urgent
<b>Melody AM</b>	CH1	The Magic Flute
	CH2	Home Sweet Home
	CH3	Fur Elise
<b>Buzzer AB</b>	CH1	beep beep beep beep
	CH2	Ding dong
	CH3	bee~bee~bee~

#### 4 Fully enclosed structure

- Highly durable aluminum housing is a perfectly enclosed structure with excellent waterproofing and dust-proofing.
- Convenient line connection with the terminal box installed at the bottom of the product



# AUMS-125 Series

## Warning Light & Electronic Horn Combinations for Heavy Industry Applications



**AUMS-R125-25W**



### AUMS-R125

Bulb Revolving Warning Light & Electronic Horn



- Heavy Duty Industrial Bulb Revolving Warning Light & Electronic Horn Combinations (Ø125mm)
- Rev. count : 90 – 100

Model	Voltage	Current	Sound & volume	Bulb	Weight	Color	
AUMS-R125 25W (standard)	AC110V	0.42(A)	Siren <b>AS</b> / 120dB	12V 15W	4720g	● Red (R)	
	AC220V	0.21(A)		12V 15W			
	DC12V	3.76(A)	Melody <b>AM</b> / 120dB	12V 15W	4153g	● Yellow (Y)	
	DC24V	1.79(A)	Buzzer <b>AB</b> / 120dB (See table below)	24V 15W			● Green (G)
	DC48V	0.94(A)		48V 15W			



**AUMS-L125-25W**



### AUMS-L125

Multiple Function LED Warning Light & Electronic Horn



- Heavy Duty Industrial Multiple Function LED Warning Light & Electronic Horn Combinations (Ø125mm)
- 2 types of LED brightness : standard and high luminance
- 4 types of operation ( steady / flashing-revolving / flashing / revolving ) are available using a microchip
- Rev. count : Randomly controlled

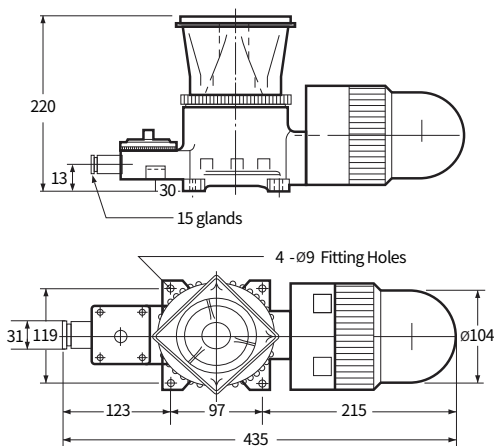
Model	Voltage	Current	Sound & volume	LED EA	Weight	Color
AUMS-L125 25W (standard)	AC110V	0.29(A)	Siren <b>AS</b> / 120dB Fire / Emergency / Urgent	54EA	4250g	● Red (R)
	AC220V	0.14(A)		54EA		
	DC12V	2.51(A)	Melody <b>AM</b> / 120dB The Magic Flute Home Sweet Home Fur Elise	54EA	3957g	● Yellow (Y)
	DC24V	1.22(A)		54EA		
	DC48V	0.59(A)		54EA		
AUMS-L125H 25W (high luminance)	AC110V	0.31(A)	Buzzer <b>AB</b> / 120dB bee bee bee bee Ding dong bee~bee~bee~	90EA	4270g	● Green (G)
	AC220V	0.18(A)		90EA		
	DC12V	2.79(A)	90EA	3977g	● Blue (B)	
	DC24V	1.37(A)	90EA			
	DC48V	0.67(A)	90EA			



**AUMS-CL125-25W**

### Technical Diagram Unit: mm

#### AUMS 125



### AUMS-CL125

Caution LED Warning Light & Electronic Horn

- Heavy Duty Industrial Caution LED Warning Light & Electronic Horn Combinations (Ø125mm)

MODEL	Voltage	Sound & volume	Weight	Color
AUMS CL125 -25W	AC110V	Siren <b>AS</b> / 120dB	4052g	● Red (R)
	AC220V			
	DC12V	Melody <b>AM</b> / 120dB	3452g	● Green (G)
	DC24V	Buzzer <b>AB</b> / 120dB		



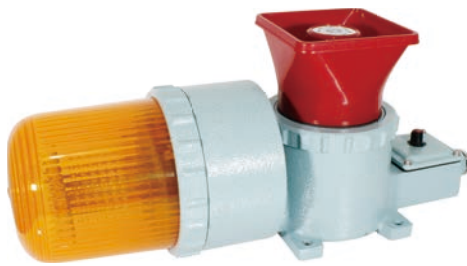


# AUMS-150 Series

## Warning Light & Electronic Horn Combinations for Heavy Industry Applications



AUMS-R150 -25W



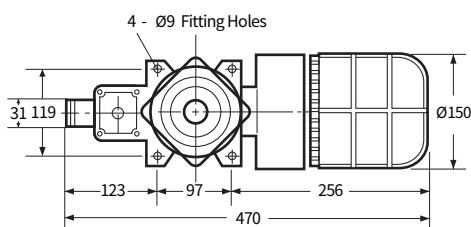
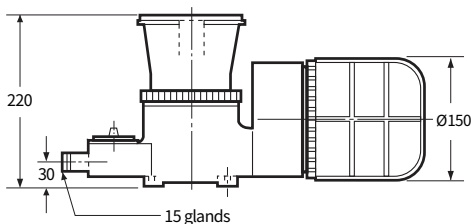
AUMS-L150 -25W



AUMS-CL150 -25W

### Technical Diagram Unit: mm

AUMS 150



### AUMS-R150

Bulb Revolving Warning Light & Electronic Horn



- Heavy Duty Industrial Bulb Revolving Warning Light & Electronic Horn Combinations (Ø150mm)
- 2 types of LED brightness: standard and high luminance
- Rev. count : 90 – 100

Model	Voltage	Current	Sound & volume	Bulb	Weight	Color
AUMS-R150 25W	AC110V	0.42(A)	Siren <b>AS</b> / 120dB Fire / Emergency / Urgent	12V 15W	5290g	● Red (R) ● Yellow (Y) ● Green (G) ● Blue (B)
	AC220V	0.21(A)		12V 15W		
	DC12V	3.76(A)	Melody <b>AM</b> / 120dB The Magic Flute Home Sweet Home, Fur Elise,	12V 15W	4723g	
	DC24V	1.79(A)		24V 15W		
	DC48V	0.85(A)		48V 15W		
AUMS-R150 35W	AC110V	0.7(A)	Buzzer <b>AB</b> / 120dB bee bee bee bee	12V 35W	5316g	
	AC220V	0.42(A)		12V 35W		
	DC12V	6.9(A)	Ding dong bee~bee~bee~	12V 35W	4749g	
	DC24V	3.49(A)		24V 35W		

### AUMS-L150

Multiple Function LED Warning Light & Electronic Horn



- Heavy Duty Industrial Multiple Function LED Warning Light & Electronic Horn Combinations (Ø150mm)
- 2 types of LED brightness: standard and high luminance
- 4 types of operation ( steady / flashing-revolving / flashing / revolving ) are available using a microchip
- Rev. count : Randomly cont

Model	Voltage	Current	Sound & volume	LED EA	Weight	Color
AUMS-L150 25W (standard)	AC110V	0.29(A)	Siren <b>AS</b> / 120dB Fire / Emergency / Urgent	54EA	4840g	● Red (R) ● Yellow (Y) ● Green (G) ● Blue (B)
	AC220V	0.14(A)		54EA		
	DC12V	2.51(A)	Melody <b>AM</b> / 120dB The Magic Flute Home Sweet Home, Fur Elise,	54EA	4547g	
	DC24V	1.22(A)		54EA	4755g	
	DC48V	0.59(A)		54EA	4630g	
AUMS-L150H 35W (high luminance)	AC110V	0.31(A)	Buzzer <b>AB</b> / 120dB bee bee bee bee	90EA	4860g	
	AC220V	0.18(A)		90EA		
	DC12V	2.79(A)	Ding dong bee~bee~bee~	90EA	4567g	
	DC24V	1.37(A)		90EA	4775g	
	DC48V	0.67(A)		90EA	4650g	

### AUMS-CL150

Caution LED Warning Light & Electronic Horn

- Heavy Duty Industrial Caution LED Warning Light & Electronic Horn Combinations (Ø150mm)

MODEL	Voltage	Sound & volume	Weight	Color
AUMS CL150 25W	AC110V	Siren <b>AS</b> / 120dB	4688g	● Red (R) ● Yellow (Y) ● Green (G) ● Blue (B)
	AC220V		4688g	
	DC12V	Buzzer <b>AB</b> / 120dB	4088g	
	DC24V		4088g	

## Heavy Duty Industrial Warning Light &amp; Electronic Horn Combinations



		AUPS Series		
Model		AUPS-01	AUPS-02	AUPS-03
Voltage		AC110V / AC220V / DC12V / DC24 / DC48V		
Dimensions (mm)	Width	200	200	250
	Height	315	341	383
	Depth	250	250	310
Material		Globe [ GPPS ], Warning Light Body [ ABS ] Support [ SUS ], Electronic Horn [ ABS ]		Globe [ GPPS, PC ] Warning Light Body [ SUS ] Electronic Horn [ ABS ], Support [ SUS ]
Light source & Operation	Bulb Revolving	•	•	•
	Multiple Function LED	•	•	•
	Caution LED	•	•	•
Mounting structure		Wall mounted		Wall mounted
Customization		User selective customized		User selective customized Protective net
Page		p.77	p.77	p.77

## Customized Warning Light &amp; Electronic Horn Combinations



		AUHP / H Series	
Model		AUHP-300 / H-500	
Voltage		AC110V / AC220V / DC12V / DC24 / DC48V	
Dimensions (mm)	Width	420	375
	Height	440	400
	Depth	200	200
Material		Globe [ GPPS, PC ] / Warning Light Body [ ABS, SUS ] / Body [ SUS ] / Electronic Horn [ ABS ]	
Customization		User customized manufacturing	
Page		p.78	



# AUPS Series

## Heavy Duty Industrial Warning Light & Electronic Horn Combinations



**AUPS-01**



**AUPS-02**



**AUPS-03**



### AUPS series model can be combined according to The user's requirement

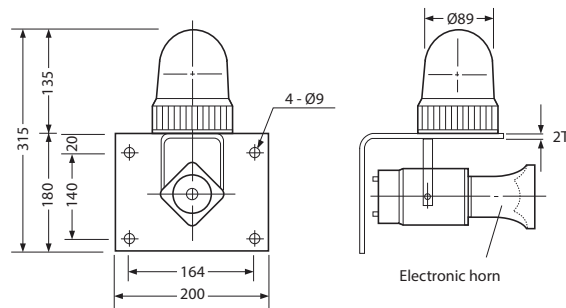
- Electronic Horn and Warning Light combination can be manufactured according to the user's selection.
- The output of Electronic Horn is 25W.
- PS-01 : Ø100 Warning Light + Electronic Horn  
PS-02 : Ø125 / Ø150 Warning Light + Electronic Horn  
PS-03 : Ø125 heavy duty industrial Warning Light + Electronic Horn

### AUPS-01

- Small Ø100 combined Warning Light + Electronic Horn

#### Technical Diagram

Unit: mm

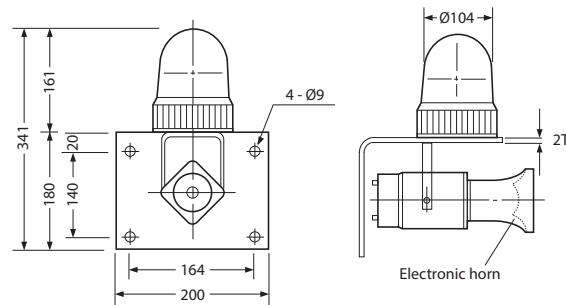


### AUPS-02

- Standard Ø125 / Ø150 combined Warning Light + Electronic Horn

#### Technical Diagram

Unit: mm



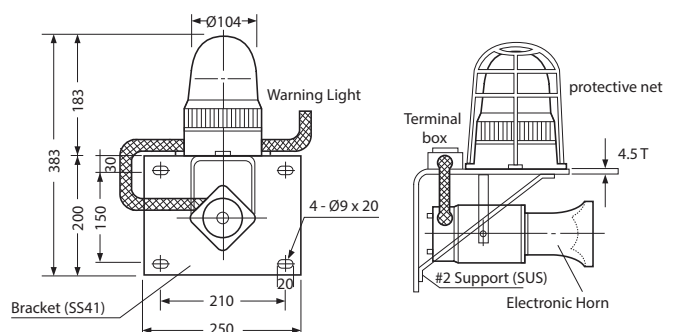
### AUPS-03



- Heavy duty industrial Ø125 combined Warning Light + Electronic Horn
- Globe protective net option is available

#### Technical Diagram

Unit: mm



### Warning Light Combination Model

Model	Warning Light Type		Warning Light
PS-01	Bulb Revolving	Ø100	AUW-R100 (P. 53)
	Multiple Function LED		AUW-L100 (P. 57)
	Caution LED		AUW-CL100 (P. 60)
PS-02	Bulb Revolving	Ø125 & Ø150	AUW-R125 (P. 53)
			AUW-R150S (P. 54)
	Multiple Function LED		AUW-L125 (P. 58)*
			AUW-L150S (P. 59)*
	Caution LED		AUW-CL125 (P. 61)
		AUW-CL50S (P. 61)	
PS-03	Heavy duty industrial Bulb Revolving	Ø125	AUM-R125 (P. 69)
	Heavy duty industrial Multiple Function LED		AUM-L125 (P. 69)*
	Heavy duty industrial Caution LED		AUM-CL125 (P. 69)

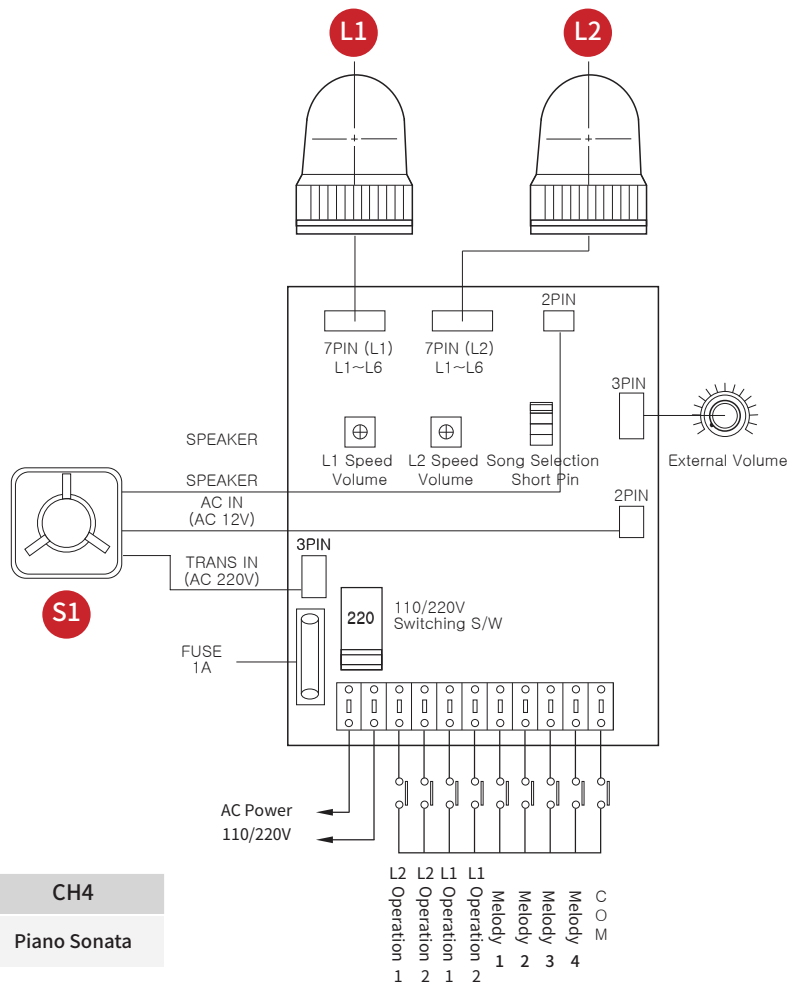
\* High luminance available model  
(For more details about the Warning Light, see P. 50)



### Special Order LED Warning Light & Electronic Horn

- Effectively usable with LED Warning Light and Electronic Horn integrated configuration
- From among LED Ø100 - Ø150 models, two can be combined
- Applicable for indicating device malfunction, material supply and stop signals, and signal transmission in automation line.
- Consist of 8 channels usable according to the user's selection.
- Volume is adjustable with external volume controller.
- Body color : gray or ivory
- Please contact us to order optional products.

### Product Wiring Diagram



### Product Combination Configuration

( See detailed specifications in p. 56- 59 )

Warning Light L1	Warning Light L2	Operation	Color
AUW-L100	AUW-L100	1 2	● Red (R)
AUW-L125	AUW-L125	Steady - Flashing	● Yellow (Y)
AUW-L150S	AUW-L150S	Flashing - Rotation	● Green (G)
Electronic Horn		AUP - EWH - 25W ( P.64 )	● Blue (B)

### 4 Melody Sounds

CH 1	CH 2	CH 3	CH 4
Home Sweet Home	Fur Elise	Turkish March	Piano Sonata

### Technical Diagram

Unit: mm

